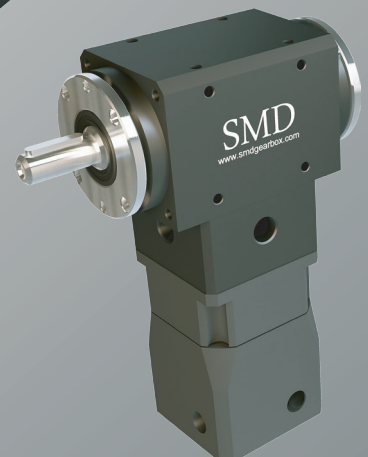
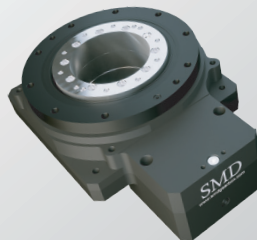


SMD GEARBOX



SMD

BRILLIANTLY AGILE!



HIGH PRECISION SERVO GEARBOX

SS Series - Right Angle Gearbox



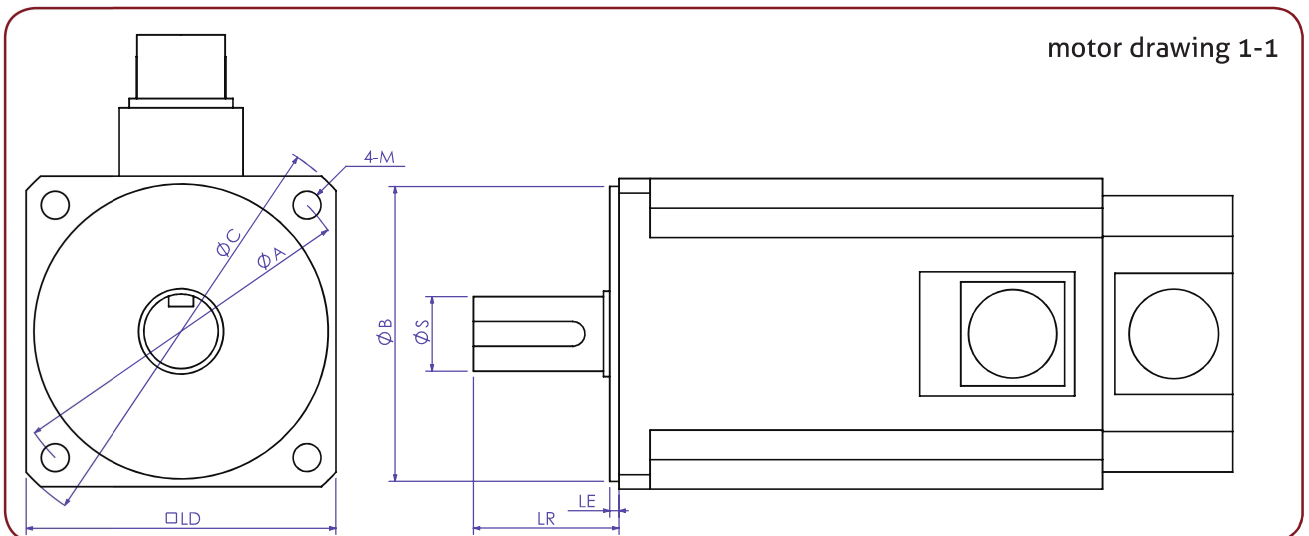
SS	60	F	010	S	B	A
Model Name	Square Profile	Output Shaft F-Hollow Shaft SF-Solid Shaft	Ratio 1:4~1:200	Refer Motor Drawing 1-1		

SS 070
SS 090
SS 120

70X70mm
92X92mm
115X115mm

SS 150
SS 180

142X142mm
182X182mm



Feature

- » Hollow Shaft and Solid Shaft.
- » Adjustable backlash and suitable low load and intermitted motion.
- » Hollow output shaft design for various applications and 5 mounting surfaces for flexible installations.
- » Arguably the easiest Right-Angle gearhead on the market to geometrically integrate into your machine. Rectangular "cube-like" geometry provides for easy fitting into your device. With 5 mounting surfaces, other components can be attached to the SS.

Specification Chart

SS gearhead Type (1) (3)	Unit	SS42	SS70	SS90	SS120	SS150	SS180
includes In-Line input type		SNP40	SNP60	SNP90	SNP120	SNP120	SNP150
Ratio	:	1	2	2	2	2	2
Nominal Output Torque	Kgf·m/Nm	1.4 / 13.7	4.5 / 44.1	13.5 / 132	22.5 / 220	45 / 441	81 / 793
Maximum Acceleration Torque	Kgf·m/Nm	3 times nominal output torque					
Emergency Stop Torque	Kgf·m/Nm	3.4 times nominal output torque					
Permissible Input Speed	rpm	1500	1200	1000	800	800	500
Permissible Output Speed	rpm	1500	600	500	400	400	250
Backlash	Arc-min	6	3	3	3	3	3
Maximum Radial Force	Kgf/N	25/245	86/ 843	140/ 1373	250/ 2452	350/ 3432	550/ 5394
Maximum Axial Force	Kgf/N	12.5/ 118	43/ 422	70/ 686	125/ 1226	175/ 1716	257/2697
Allowable Input Shaft Diameter	mm	5~8	6.35~14	11~24	19~35	19~35	20~38
Rated Operation Life	hr	10,000 At permissible input speed and nominal output torque.					
Operating Temperature	°C	-10 °C to 40 °C (ambient) / 90 °C (case maximum temp.)					
Sound Level	dB	62	65	65	70	70	70
Mounting position & Lubrication	-	All Positions-Lubricated for life (Synthetic grease)					
Ingress Protection Class	IP	IP54					
Direction of rotation	-	Motor and gearhead shaft opposite directions					
Gearhead Inertia	Kg·cm²	0.049	0.127	1.25	2.274	2.274	10.19
Efficiency at Full Load	%	1 Stage 85% - 2 Stage 80%					
Weight	kg	1	2.2	5.7	12.5	17	52.1
No Load Running Torque	Kgf·m/Nm	0.51/0.05	3/0.3	6.1/0.6	12/1.2	12/ 1.2	14.8/1.45

» *SF* suffix indicates solid shaft -- the 42 size is available only with ratio 1 and solid output shaft.

» *SS42SF* ratios-- L1(1stage): 4,5,7,10; L2 (2stage): 12,15,16,20,21,25,28,30,35,40,49,50,70.

» *F* suffix indicates Hollow shaft is standard. However, "solid output shaft" and "double output shafts" are regular options.

» *SS 70 to SS150* ratios -- L1(1stage): 6,8,10,14,20 ; L2 (2stage): 18,24,30,32,40,42,50,56,60, 70,80,98,100,140,200. Please inquire for any ratio not shown.

Installed Precautions

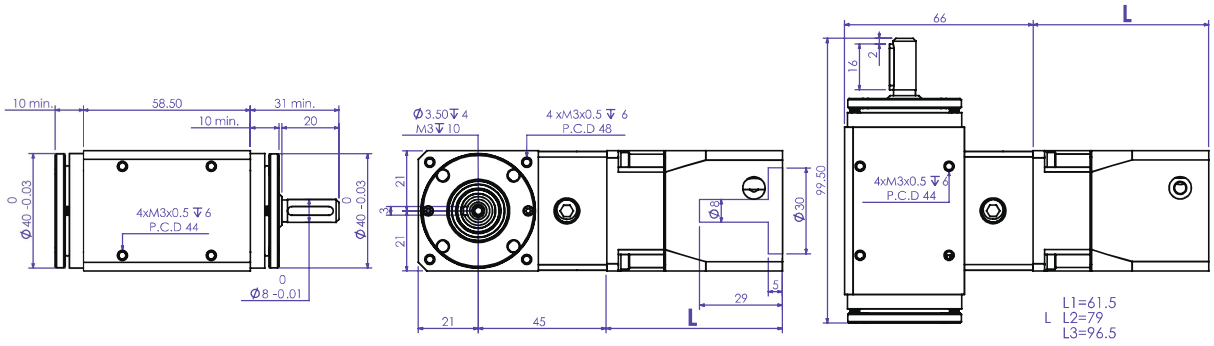
» It must be run through installing in right-angle Hollow Gearbox.

» The SS can install in deviation when running through yet:

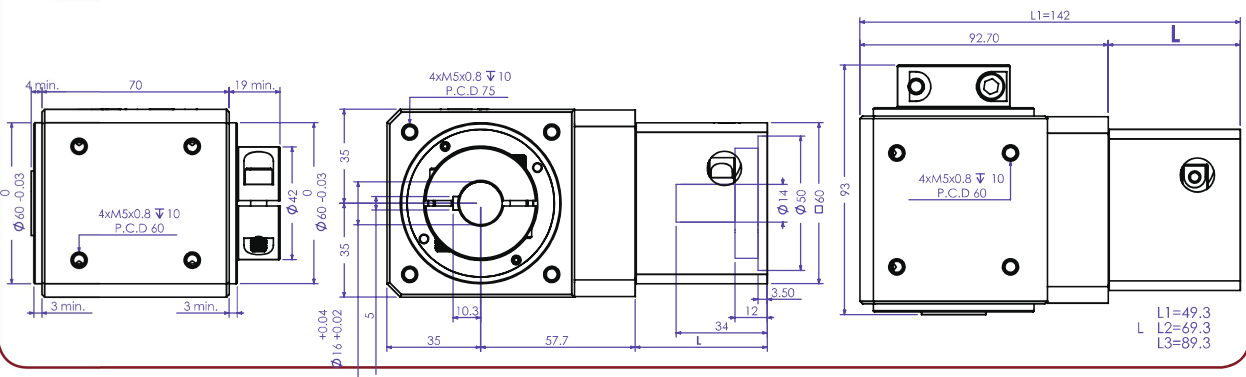
1. The deflection can't be greater than 0.5 degree.
2. The Eccentricity can't be greater than 0.03mm.

Mechanical dimension

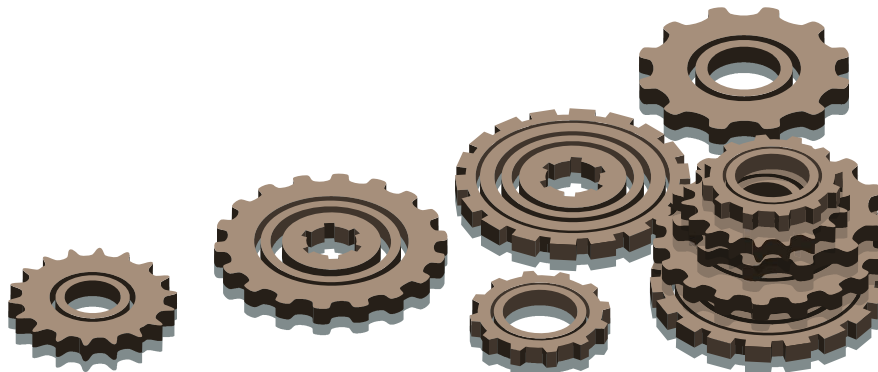
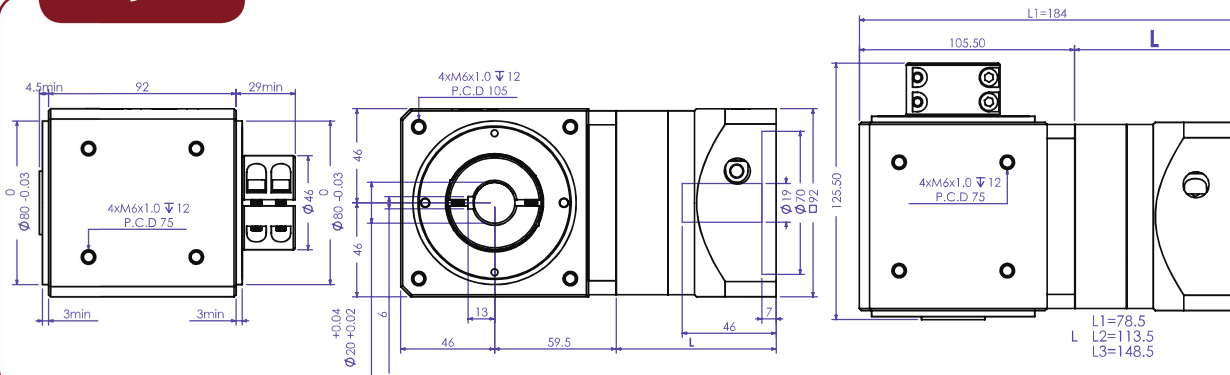
SS42SF



SS70F

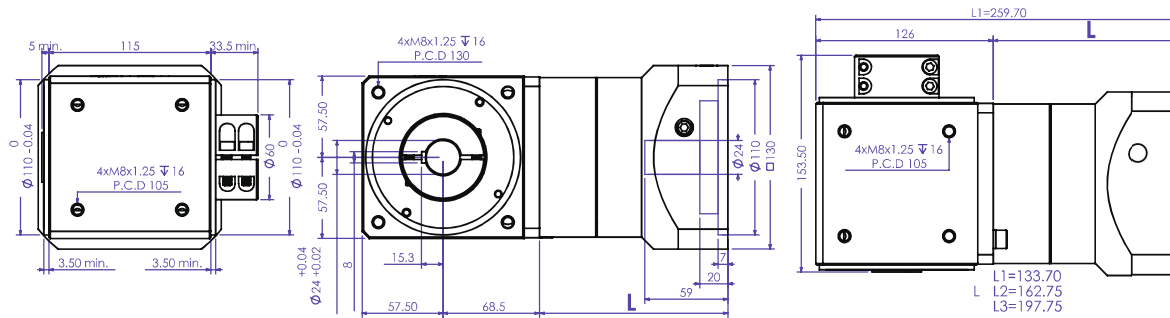


SS90F

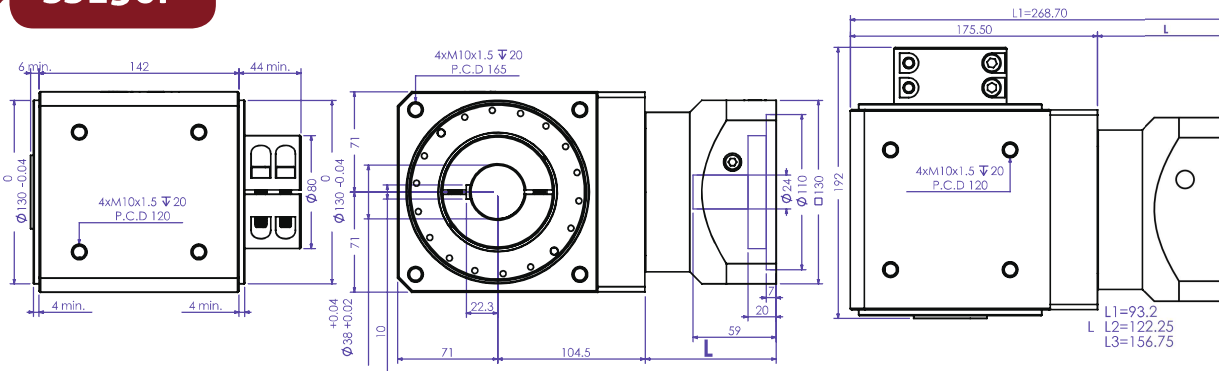


Mechanical dimension

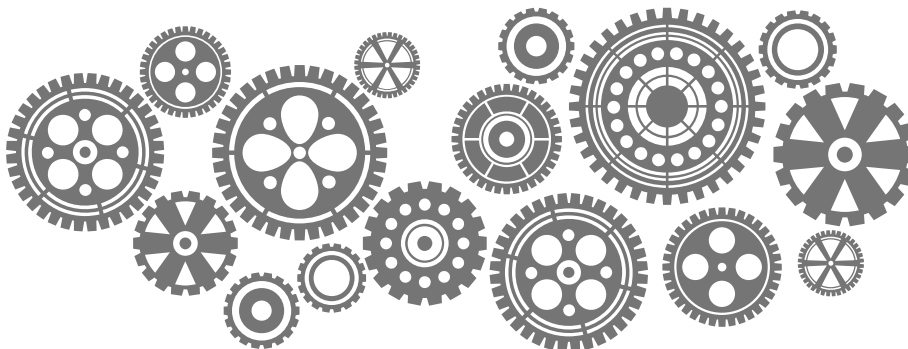
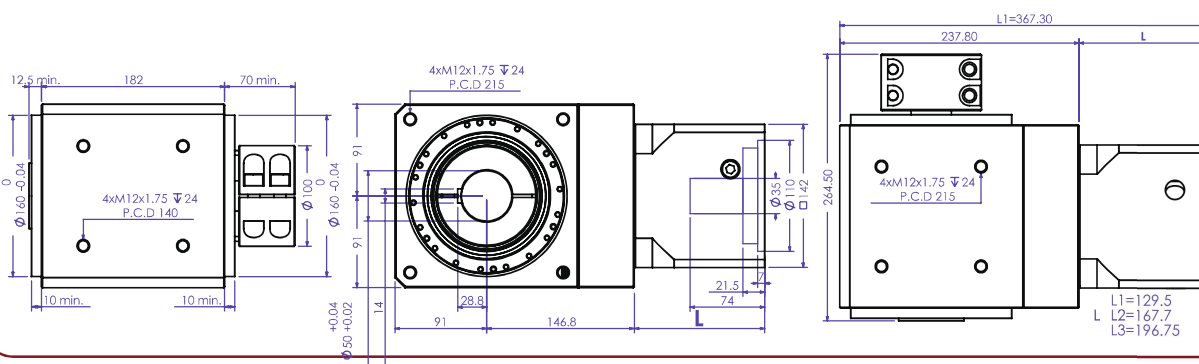
SS120F



SS150F



SS180F



SMD Right Angle Gearbox

4 Reasons to Increase 50% Production



1

EXCLUSIVE PRODUCT,
BACKLASH 1 ACR-MIN



2

INCREASES MACHINE
WORKING SPEED & STABILITY



3

LOW VIBRATION



4

INCREASE PRODUCTION
EFFICIENCY & QUANTITY



GET IN TOUCH!

HEADQUARTERS

SMD Gearbox (Taiwan)

📍 No. 339, Taishun Road, Taiping Dist,
Taichung City, Taiwan

☎ +886 (09) 67388376

HEAD OFFICE (OVERSEAS)

SMD Gearbox (India)

📍 A-51, H Block, M.I.D.C, Pimpri-Chinchwad,
Pune-411018, Maharashtra, India

☎ +91 7030669818

✉ sales@smdgearbox.com

🌐 www.smdgearbox.com

